

CONDÉ NAST

# House & Garden

SOUTH AFRICA'S FINEST DECOR MAGAZINE

AUGUST 2018 R55,50 (incl.VAT)  
OTHER COUNTRIES R48,26

## THE NEW KITCHEN CULTURE



# FRESH STYLE INFLUENCES

**CUTTING-EDGE INTERIORS**  
**AN EXPERT EDIT OF ART & DESIGN**



**A**t this year's 100% Design showcase the focus is on our growing need to make the most of urban living conditions – aptly titled 100% Apartment. Heading up the feature is Marco Simal of MotherCityHardware, with art supplied by WhatIfTheWorld Gallery, who has created this how-to guide for maximising a compact home with hardworking, multifunctional design pieces. ■ **MotherCityHardware** [mothercityhardware.com](http://mothercityhardware.com); **WhatIfTheWorld Gallery** [whatiftheworld.com](http://whatiftheworld.com)



**OPT FOR A ROUND TABLE**  
This one by Gregor Jenkin has thin legs that are lightweight and unobtrusive.



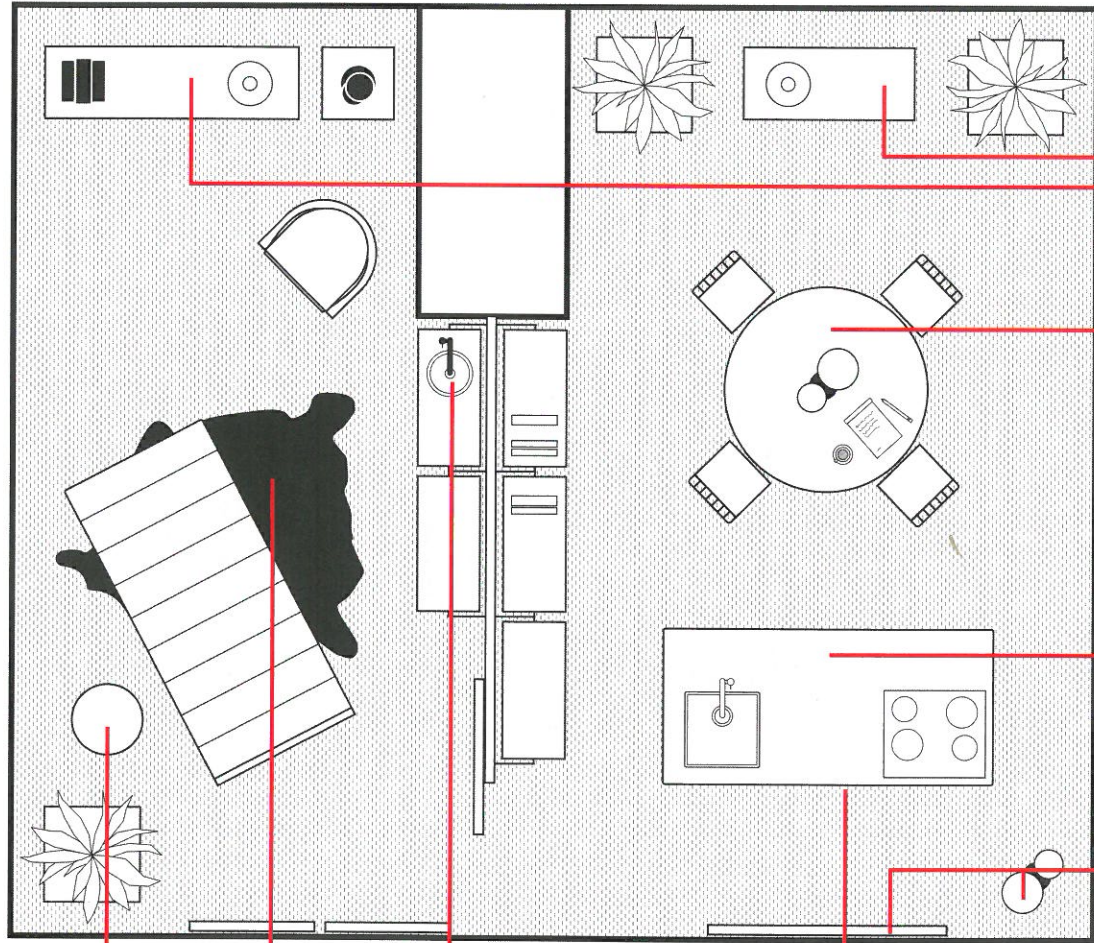
**EVERYTHING MUST WORK**  
The traditional server is simply a surface but here it's been upgraded to include storage by MotherCityHardware.



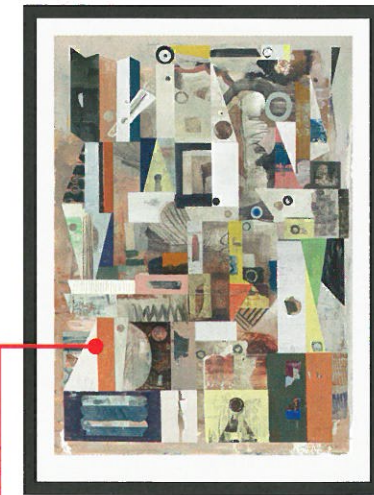
**MARCO SIMAL**  
FOUNDER,  
MOTHERCITYHARDWARE  
‘In the past, functional items were hidden, but today their form is just as important – these pieces need beauty’



**USE GLASS STORAGE**  
Storage units (such as this one by MotherCityHardware) with glass doors proudly display pieces rather than hide them. Also a great impetus for decluttering.



**THE ALL-IN-ONE KITCHEN**  
In place of an isolating galley kitchen, a fully-equipped island offers storage (as well as space for an integrated fridge) and creates a social gathering point. This model is by MotherCityHardware.



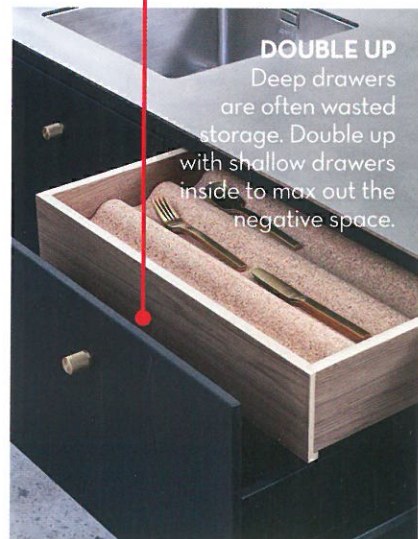
**FUNCTIONAL ART**  
A graphic, organic piece will break the rectilinear design of a modern apartment space.



**KEEP IT NATURAL**  
A sheepskin from The South African Sheepskin Co adds instant softness to an urban space.



**BREAK CONVENTION**  
Riff on the old-school, out-of-bathroom wash station. This piece from Globo is a simple way to introduce colour.



**DOUBLE UP**  
Deep drawers are often wasted storage. Double up with shallow drawers inside to max out the negative space.



**JUSTIN RHODES**  
GALLERY DIRECTOR,  
WHATIFTHEWORLD  
‘Turn an empty corner into a point of interest with a freestanding sculpture or even a suspended piece’



**THE FUTURE IS CORK**  
Sustainable, waterproof, warm underfoot and sound insulating, no material works harder than cork. This stool is by designer Laurie Wiid.



**LAURENCE BRICK**  
MD, PLATFORM CREATIVE AGENCY  
‘We no longer crave large, wasted spaces but interiors that encourage connection. Our homes demand pieces that are functional, yes, but with soul’

